

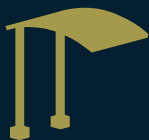
# 2026 Product Catalog



DRYERS



SIGNAGE



STRUCTURES



VACUUMS



METER BOXES



PALM DRYERS



LED LIGHTING



Your Manufacturing Partner

# premier

## Dryers



Arch Dryers .....	4
Exterior Wall Mount Dryers .....	6
Interior Wall Mount Dryers .....	7
Tunnel Dryers .....	8
Producers .....	9
UL® Listed VFD & Starter Panels .....	11
Evolution Series .....	12
EcoMax Axial Dryers .....	14
Custom Large Vehicle Dryers .....	16
Premier Air Gate .....	17

## Signage



Arches & Overheads .....	18
Menu & Menu Boards .....	23
Pedestals & Wall Mounts .....	24
Roto-Molded Signs .....	24
Tunnel/Wall Signs .....	25
Channel Letters .....	25
Countdown Timer Signs .....	25
Custom Shaped Wall Pedestals & Wall .....	26
Printed ACM .....	27
ACM In-Bay Signage .....	27
WindMaster® Inserts & Pump Toppers .....	27

## Who We Are

We are a family owned, industry-leading company, offering complete metal fabrication, finishing services and products. Premier Companies has its own product line that supplies the car wash, and many other industries with Dryers, Vacuums, Signage, LED Lighting and Canopy Stations. All of our products are proudly designed and manufactured in Central Wisconsin.

# PROUDLY MADE IN

# mi<sup>er</sup>

## What We Do

The selection of products manufactured by Premier Companies are not only of the highest quality, but are also available in a variety of options to ensure you find exactly what you're looking for. With top-of-the-line materials, cutting-edge production technologies and a highly qualified team, we guarantee complete satisfaction.

WISCONSIN, USA 



## Structures

Pay Station Canopies .....	28
Clearance Structures .....	29



## Vacuums

Stainless Steel Canopy Vacs .....	30
Silver Bullet .....	32
Stainless Steel Vacs .....	33
3 Phase Vacs .....	34



## Meter Boxes

Meter Boxes .....	35
-------------------	----



## Palm Dryers

Palm Dryers .....	36
-------------------	----



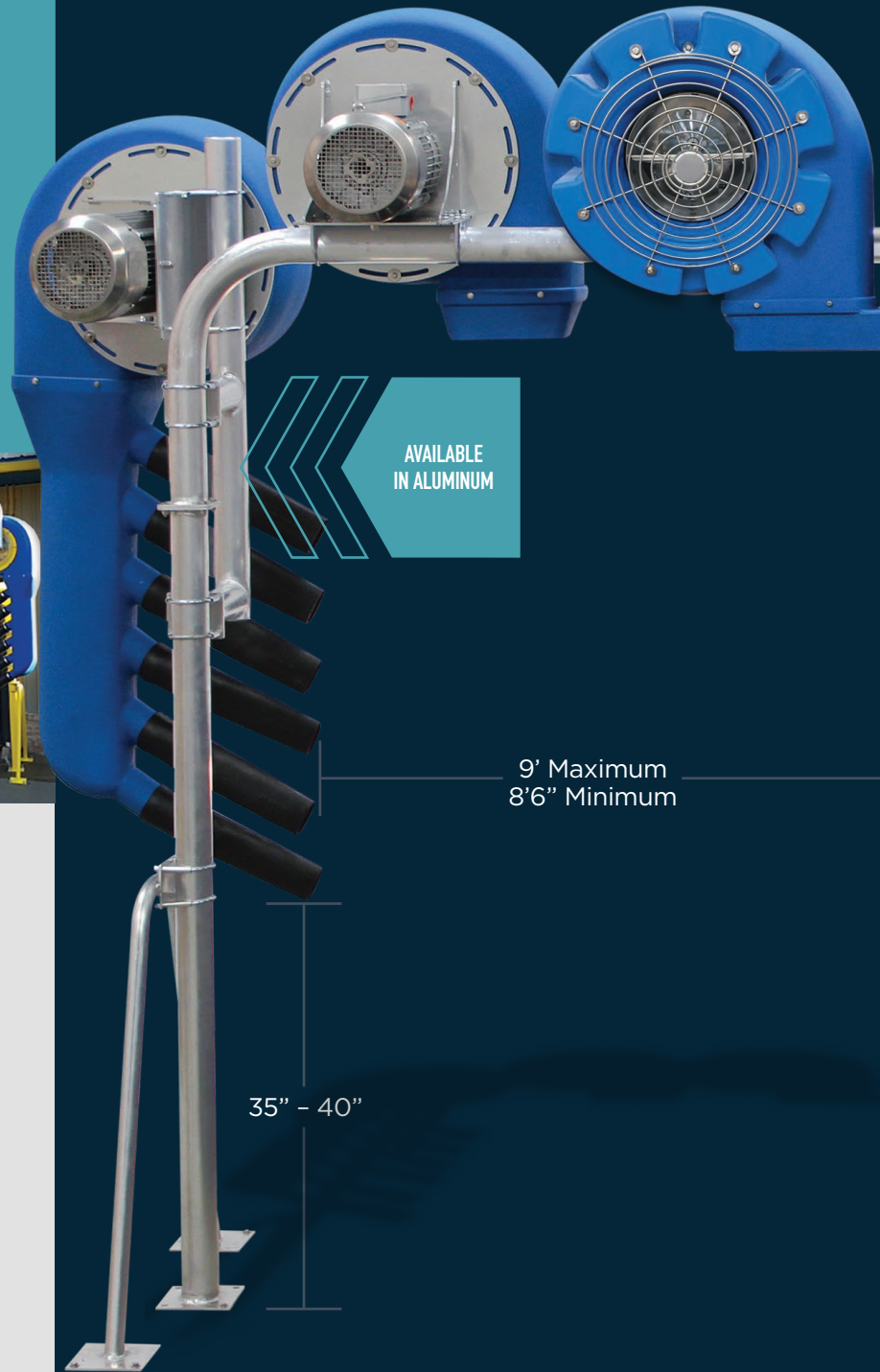
## LED Lighting

Color Changing LED Tube Lighting .....	38
---	----

Premier manufactures custom drying equipment for many industries all over the world. Many hours and years of experience studying air flow and air distribution have made our dryers number one on the market.

At Premier, our customers are our partners. We provide our customers with individualized solutions to maximize functionality for the perfect dryer system set up. Not only does Premier provide great products and service, we also lead in price, custom design, private labeling and dryer performance. Our positive and knowledgeable staff are ready and available to make your venture a profitable and enjoyable experience.

# Floor Mounted Arch Dryers

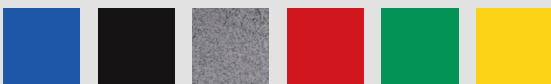


- Arches available in aluminum or stainless steel:



Aluminum    Stainless Steel

- Standard dryer clearance is 90", but is fully customizable to any specs desired
- HDPE producer housing colors available:



Blue    Black    Granite Gray    Red    Green    Yellow



SHOWN WITH  
OPTIONAL  
AIR GATE

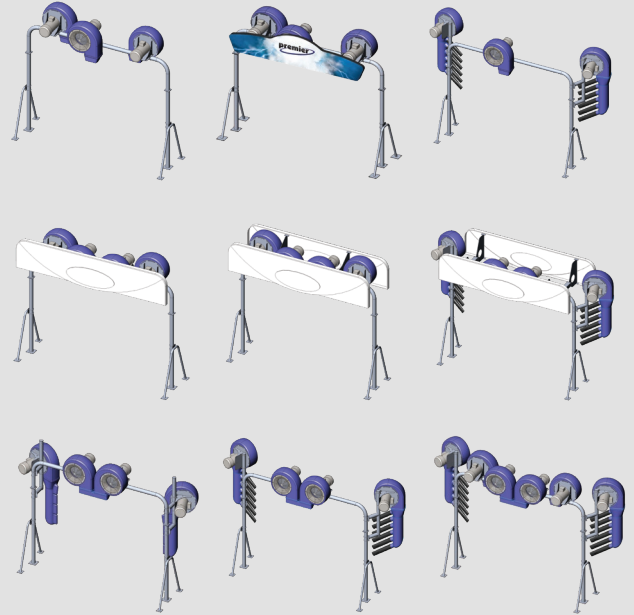
MOTORS AVAILABLE  
IN 5HP, 7.5HP, 10HP  
OR 15HP

MANY NOZZLE  
OPTIONS ARE  
AVAILABLE  
*page 9*

AVAILABLE  
IN STAINLESS  
STEEL

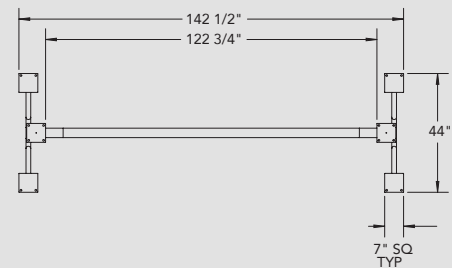
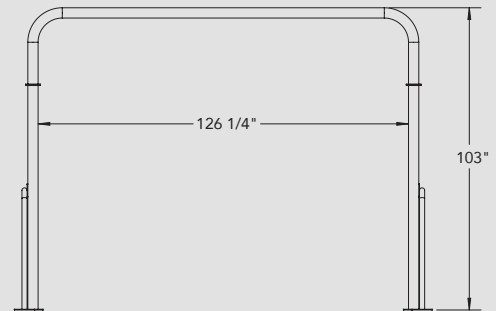
## Common Arch Configurations

Additional and customizable configurations are available. Please contact us.



## Arch Dimensions

Standard dryer clearance is 90", but is fully customizable to any specs desired.





SEVERAL PRODUCER HOUSING COLORS ARE AVAILABLE

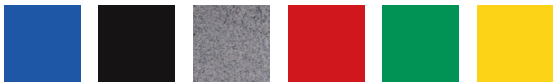
# Exterior Wall Mount Dryers

- Aluminum and stainless steel available



Aluminum Stainless Steel

- HDPE producer housing colors available:



Blue Black Granite Gray Red Green Yellow

- Standard powder coat colors are:

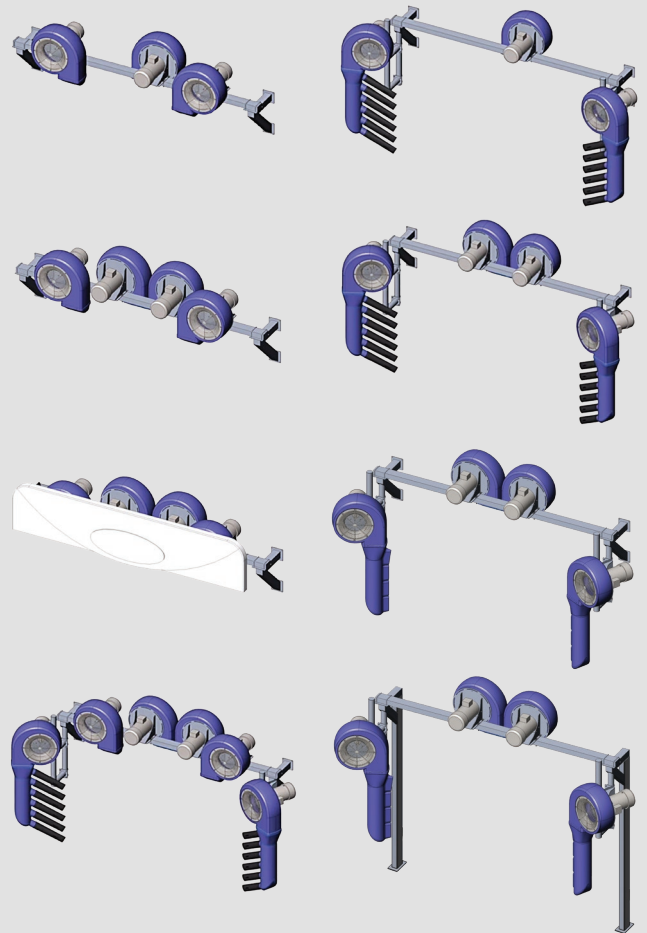


Blue Black Gray Red Green Yellow White

- Custom powder coat colors available by request

## Common Exterior Dryer Configurations

Additional and customizable configurations are available. Please contact us.





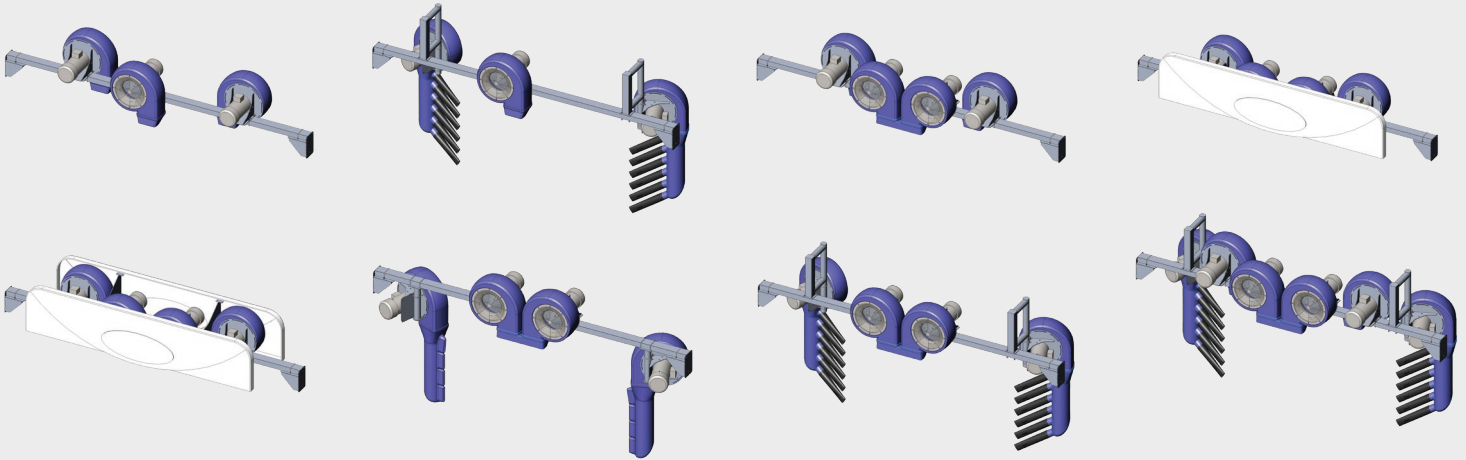
VARIOUS  
POWDER COAT  
COLORS ARE  
AVAILABLE

## Interior Wall Mount Dryers



### Common Interior Dryer Configurations

Additional and customizable configurations are available. Please contact us.



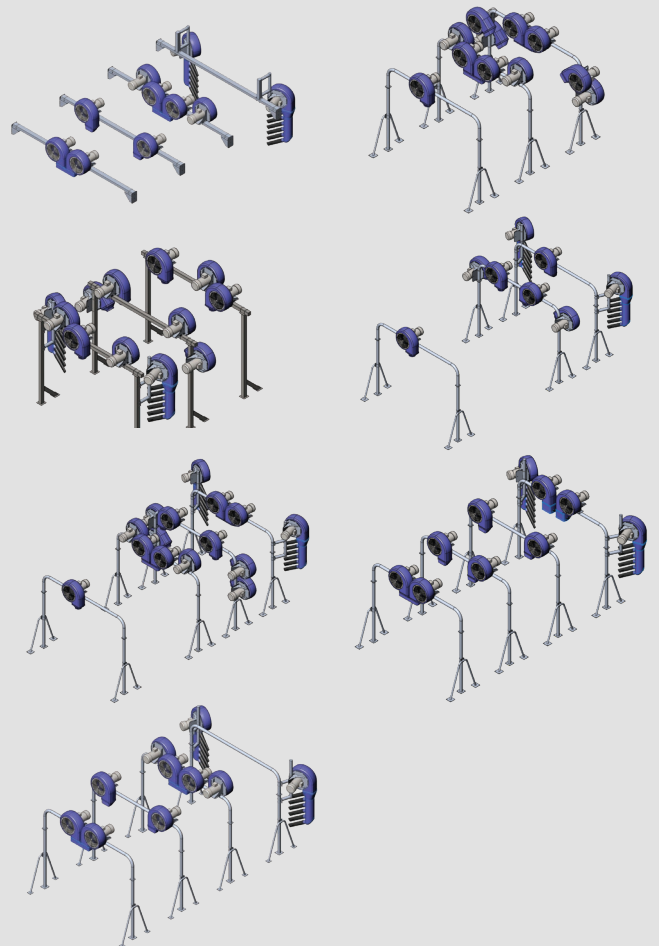


MOTORS  
AVAILABLE  
IN 5HP, 7.5HP,  
10HP OR 15HP

# Tunnel Dryer Applications

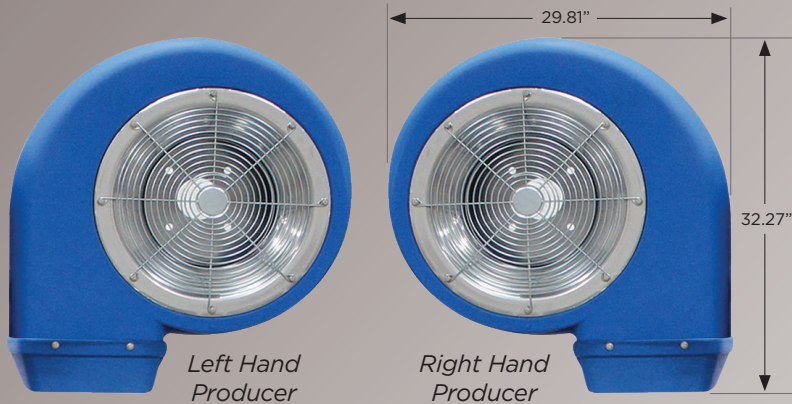
## Common Tunnel Configurations

Additional and customizable configurations are available. Please contact us.





## Producers



- HDPE producer housing colors available:



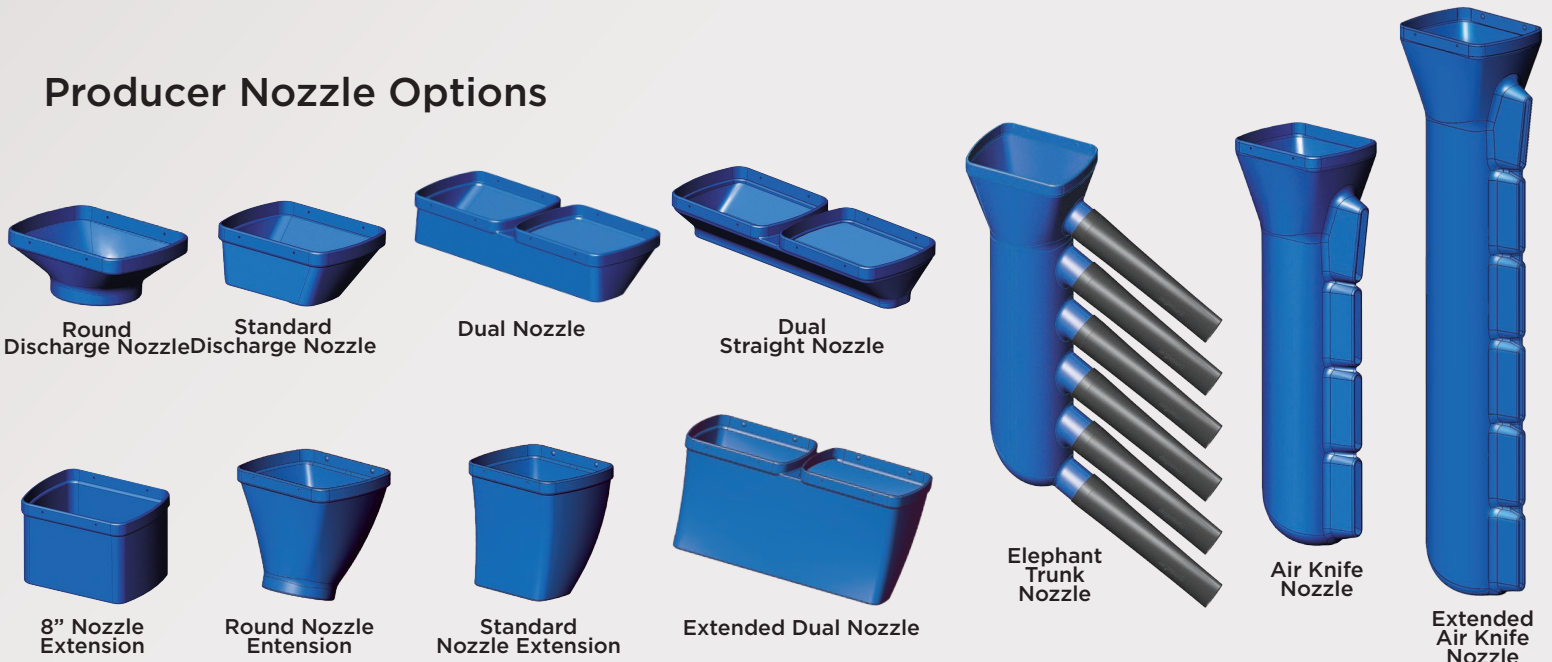
- Fiberglass cover with custom graphics available
- LED backlit cover with custom graphics available
- UL Listed VFD and standard starter panels available
- LED lighting available
- Custom applications available
- 5 HP available upon request

## Producer Specifications

	7.5 HP Producer	10 HP Producer	15 HP Producer
<b>208 V FLA</b>	22.3 amps	29.0 amps	40.2 amps
<b>230 V FLA</b>	20.2 amps	26.2 amps	36.36 amps
<b>460 V FLA</b>	9.7 amps	13.1 amps	18.18 amps
<b>SF amps</b>	1.15 60 Hz / 1.0 50Hz	1.15 60 Hz / 1.0 50Hz	1.15 60 Hz / 1.0 50Hz
<b>CFMs</b>	3525	4200	4500
<b>RPM</b>	3540	3600	3600
<b>Air Velocity</b>	120 mph	135 mph	142 mph
<b>TEFC Motors</b>	3 Phase	3 Phase	3 Phase
<b>Frame Size</b>	213 Tc	213 Tc	213 / 5 Tc
<b>Total Weight</b>	119 lbs	119 lbs	128 lbs

Efficiency Level - (Minimum), 88.5% guaranteed efficiency, Nema NCM efficiency (Normal) 90.2%

## Producer Nozzle Options



# How Loud Are Our Producers?

## Inside Door Closed

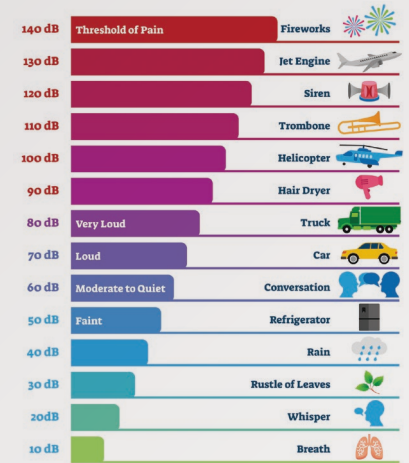
Distance From Bay	90 HP (6 - 15 HP)	60 HP (4 - 15 HP)	45 HP (3 - 15 HP)	10 HP (1 - 10 HP)
10 ft	102 dB	101 dB	100 dB	94 dB
20 ft	100 dB	99 dB	98 dB	92 dB
30 ft	98 dB	98 dB	98 dB	91 dB

## Outside Door Open

Distance From Bay	90 HP (6 - 15 HP)	60 HP (4 - 15 HP)	45 HP (3 - 15 HP)	10 HP (1 - 10 HP)
10 ft	98 dB	95 dB	96 dB	90 dB
20 ft	92 dB	90 dB	89 dB	84 dB
30 ft	88 dB	86 dB	85 dB	79 dB
40 ft	84 dB	82 dB	82 dB	76 dB
50 ft	80 dB	80 dB	79 dB	74 dB

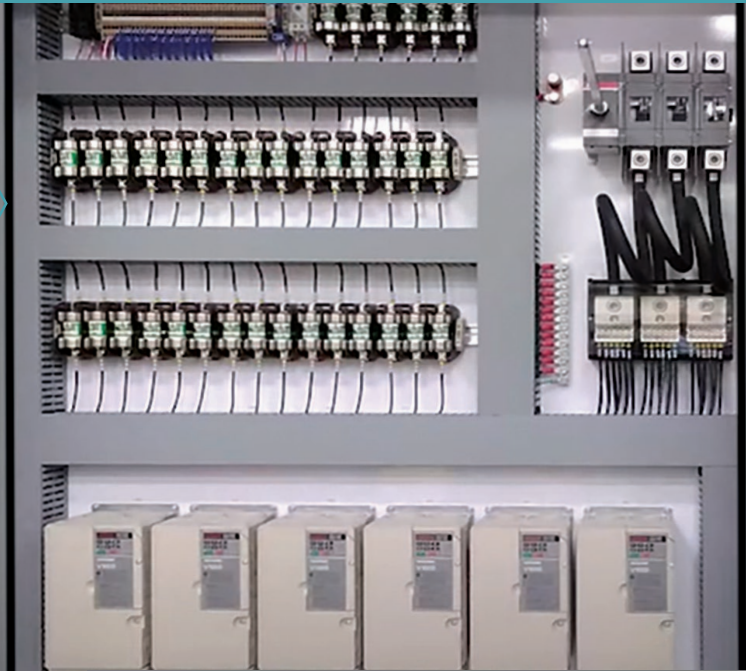
Decibel levels may drop 4 to 5 dB's or more with full cover surrounds or silencer cones. Readings may vary. Readings were conducted with Premier Plastic Housings.

## Decibel Scale





SAVE ENERGY  
AND MONEY  
WITH OUR  
VFD PANELS!



## VFD and Starter Panels

### Features and Benefits

- Yaskawa VFDs (world leading VFD manufacturer)
- Arrives pre-programmed to your specific needs
- User-friendly with 24/7 technical support
- Energy rebates may be available in your area
- Energy savings from avoiding start up current
- Eco friendly
- No mechanical moving parts
- Unlimited performance options
- Extends parts and motor life
- Replaces existing starter panel
- Reduces noise levels
- Great return on investment
- Saves you money

### Save Energy and Money

- At **58 hz**, owner saves **19%** on energy cost.\*
- At **57 hz**, owner saves **24%** on energy cost.\*
- At **55 hz**, owner saves **32%** on energy cost.\*

\* Data collected from 10 HP 208 volt during 60 second dryer time.



Watch our video to learn more about Premier VFD panels.

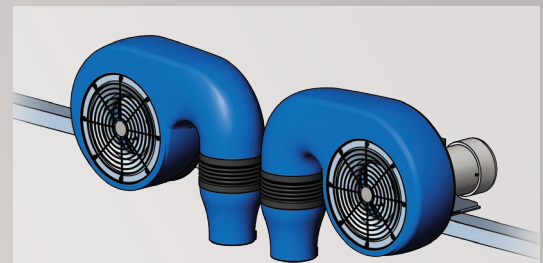
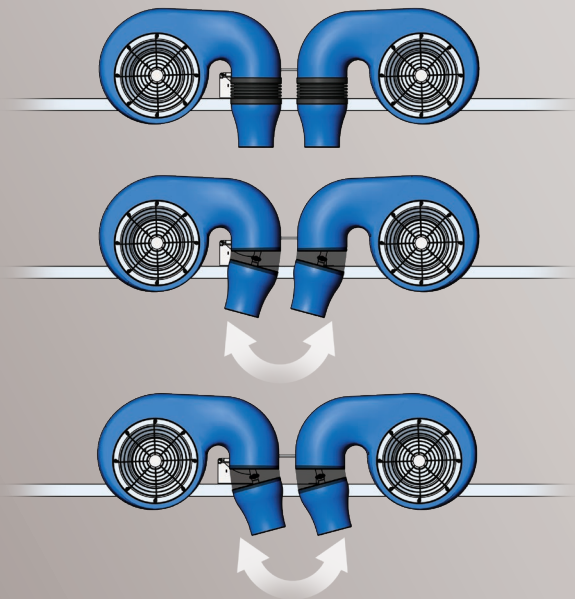




# Evolution Series

Oscillating Nozzle | Flip Nozzles

## Oscillating Nozzle



### Oscillating Nozzle

- Swings left and right approximately 30 degrees
- Pneumatic or electric actuation
- Available in single or dual configurations

- HDPE producer housing colors available:



- Fiberglass cover with custom graphics available
- LED backlit cover with custom graphics available
- UL Listed VFD and standard starter panels available
- LED lighting available
- Custom applications available
- 5 HP available upon request



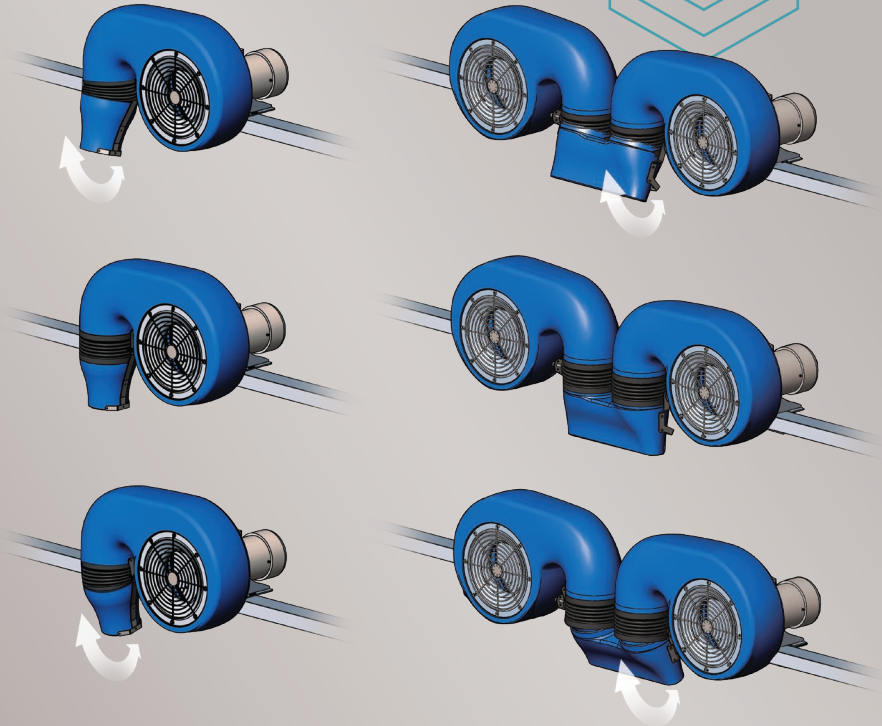


**NEW!**  
DUAL FLIP  
NOZZLE

## Flip Nozzles

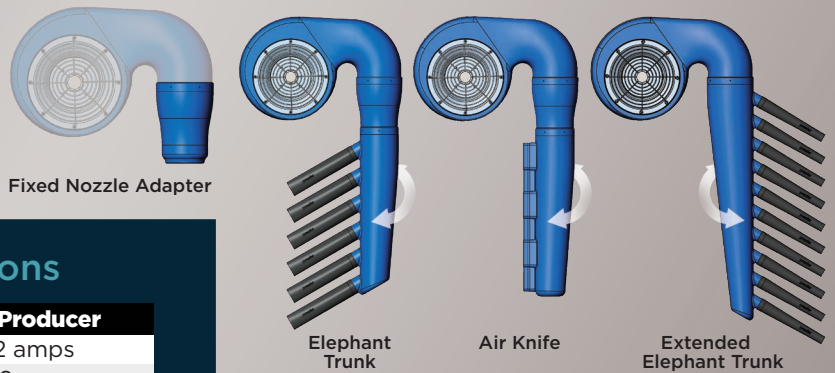
### Single or Dual Flip Nozzle

- Swings approximately 15 degrees in both forward and backward directions
- Pneumatic actuation
- Activated by photo or sonar detection
- Available in left, right, or dual configurations
- Great addition for drying the rear of vehicles



### Fixed Nozzle Adapter

- May be used as a standalone nozzle, or as an adapter for air knives and e-trunks
- Allows an e-trunk or air knife to be adjusted 360 degrees



Fixed Nozzle Adapter

Elephant Trunk

Air Knife

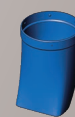
Extended Elephant Trunk

## Evolution Producer Specifications

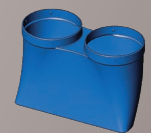
	10 HP Producer	15 HP Producer
<b>208 V FLA</b>	29.0 amps	40.2 amps
<b>230 V FLA</b>	26.2 amps	36.36 amps
<b>460 V FLA</b>	13.1 amps	18.18 amps
<b>SF amps</b>	1.15 60 Hz / 1.0 50Hz	1.15 60 Hz / 1.0 50Hz
<b>CFMs</b>	4500	4800
<b>RPM</b>	3600	3600
<b>Air Velocity</b>	140 mph	147 mph
<b>TEFC Motors</b>	3 Phase	3 Phase
<b>Frame Size</b>	213 Tc	213 / 5 Tc
<b>Total Weight</b>	119 lbs	128 lbs

Efficiency Level - (Minimum), 88.5% guaranteed efficiency, Nema NCM efficiency (Normal) 90.2%

### Nozzle Extensions



Extended Single Nozzle



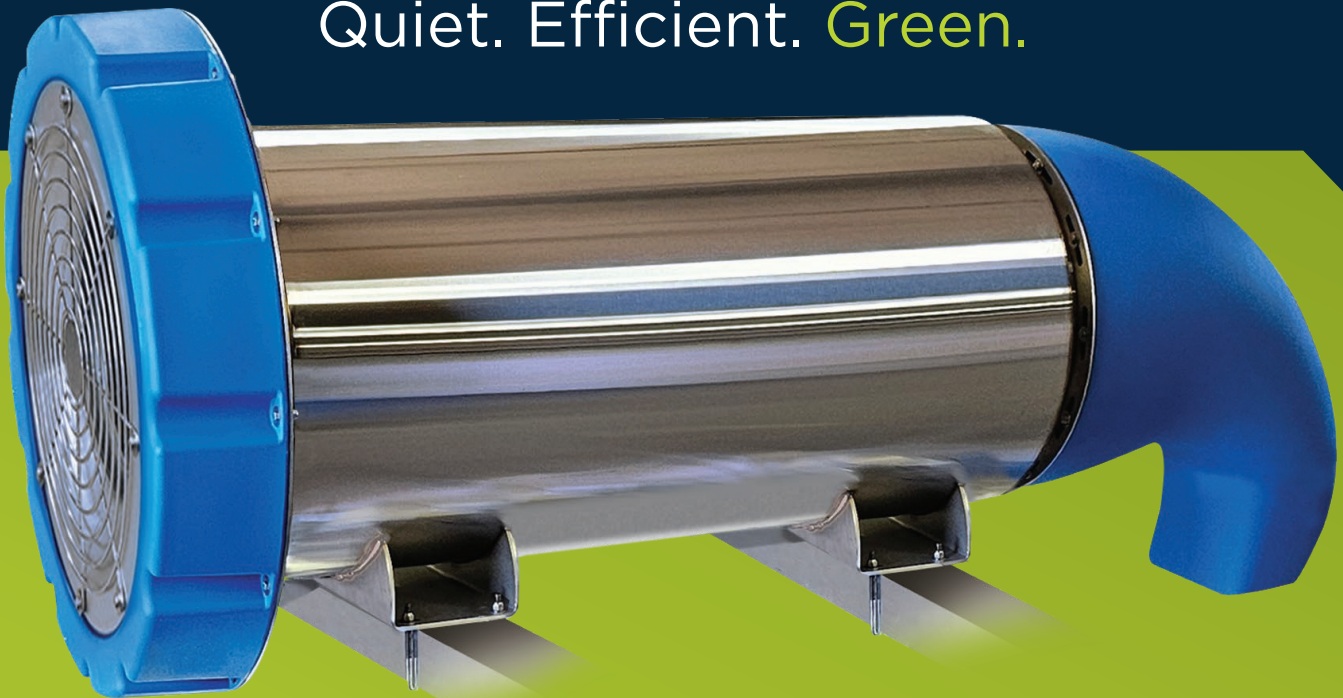
Extended Dual Nozzle

INTRODUCING

# ecoMax

MAXIMUM EFFICIENCY AXIAL DRYER

Quiet. Efficient. Green.



Engineered for both high-performance and efficiency, the EcoMax brings a noticeable upgrade to both operators and customers. The advanced blade design moves air more efficiently, cutting through water quickly and producing a quieter sound profile than traditional blowers.

By optimizing airflow, the axial fan design uses less energy without sacrificing performance — helping lower operating costs while supporting more sustainable operations. It's an ideal solution for washes located near residential

neighborhoods, where noise levels matter just as much as results. You get the drying power you need, but the disruption you don't.

Built at our Wisconsin facility out of durable stainless steel and HDPE, construction of the EcoMax offers exceptional resistance to corrosion, moisture, and chemicals commonly found in car wash environments. Built to perform, designed to last, and engineered with both operators and surroundings in mind, EcoMax sets a new standard for car wash drying technology.



## Efficiency That Performs

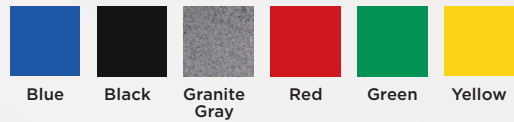
### Features and Benefits

- 90% less sound energy
- Over 50% quieter to the human ear
- Ideal for residential and noise-sensitive locations
- Significantly better working environment
- High efficiency motors (+95.6%)
- 6.9% less energy used per hour of use
- Runs cooler, longer motor life, less downtime
- VFD required
- 120 HP system saves 6.88 kWh per hour of operation
- Reduce hz for even more energy savings

### EcoMax Specifications

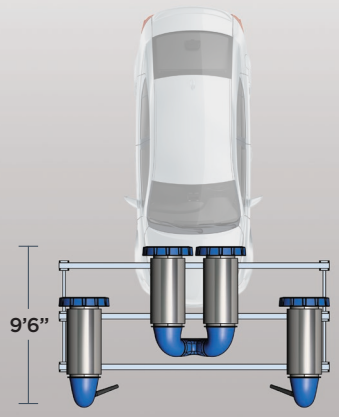
	15 HP OMEC PM Motors
208 V FLA	36.6 amps
230 V FLA	33.1 amps
460 V FLA	16 amps
SF amps	1.15 60 Hz
RPM	3600
Air Velocity	147 mph
TEFC Motors	3 Phase
Frame Size	215 Tc
Total Weight	377 lbs

- HDPE producer housing colors available:

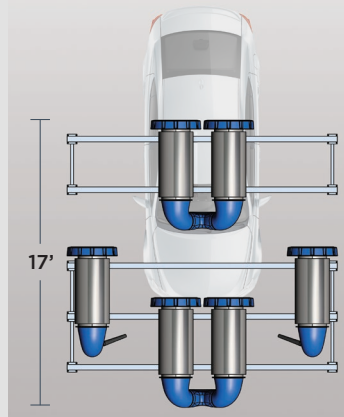


## Quieter Operation

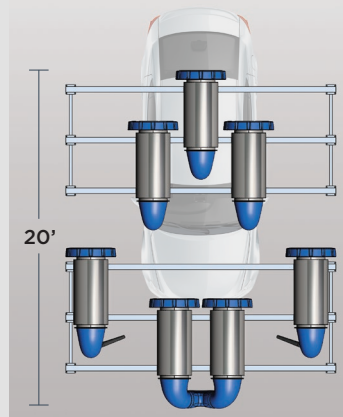
### 60 HP



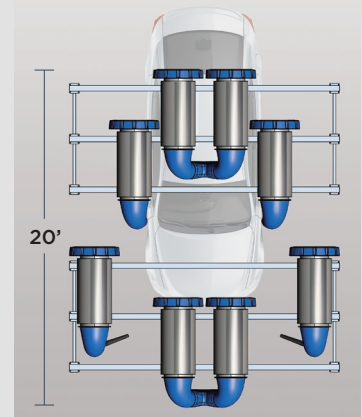
### 90 HP



### 105 HP



### 120 HP



Distance From Bay	60 HP (4 - 15 HP)
10 ft	84 dB
20 ft	78 dB
30 ft	74 dB
40 ft	72 dB
50 ft	70 dB

Distance From Bay	90 HP (6 - 15 HP)
10 ft	86 dB
20 ft	80 dB
30 ft	76 dB
40 ft	74 dB
50 ft	72 dB

Distance From Bay	105 HP (7 - 15 HP)
10 ft	86 dB
20 ft	80 dB
30 ft	77 dB
40 ft	74 dB
50 ft	72 dB

Distance From Bay	120 HP (8 - 15 HP)
10 ft	87 dB
20 ft	81 dB
30 ft	78 dB
40 ft	75 dB
50 ft	73 dB

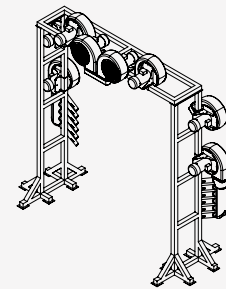
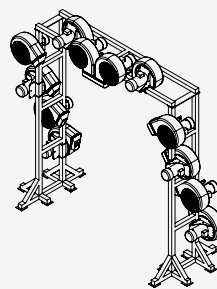
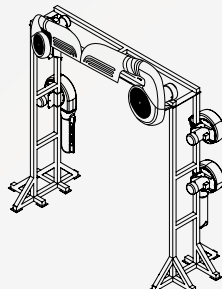
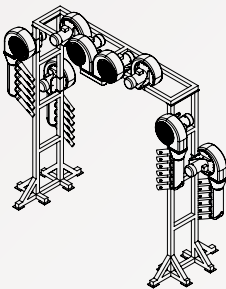
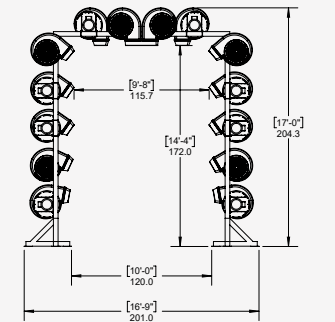
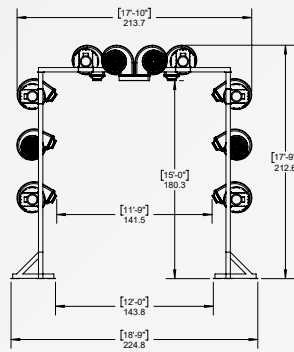
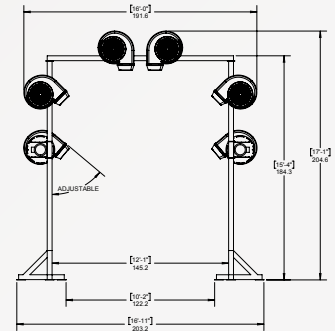
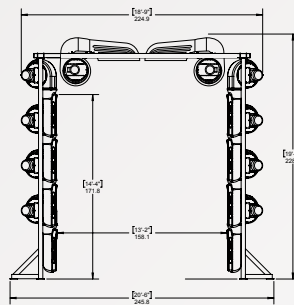
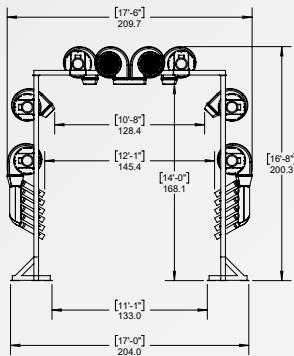
DESIGNED  
AND BUILT TO  
SUIT YOUR  
CUSTOMER'S  
NEEDS

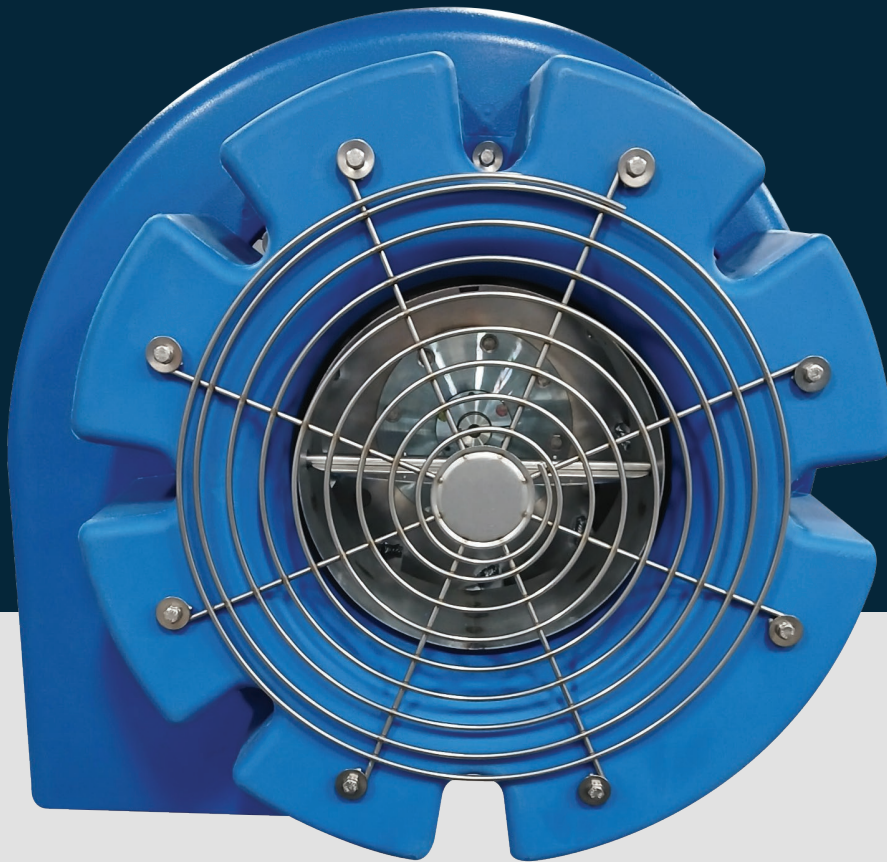
# Custom Large Vehicle Dryers



## Common Large Vehicle Dryer Configurations

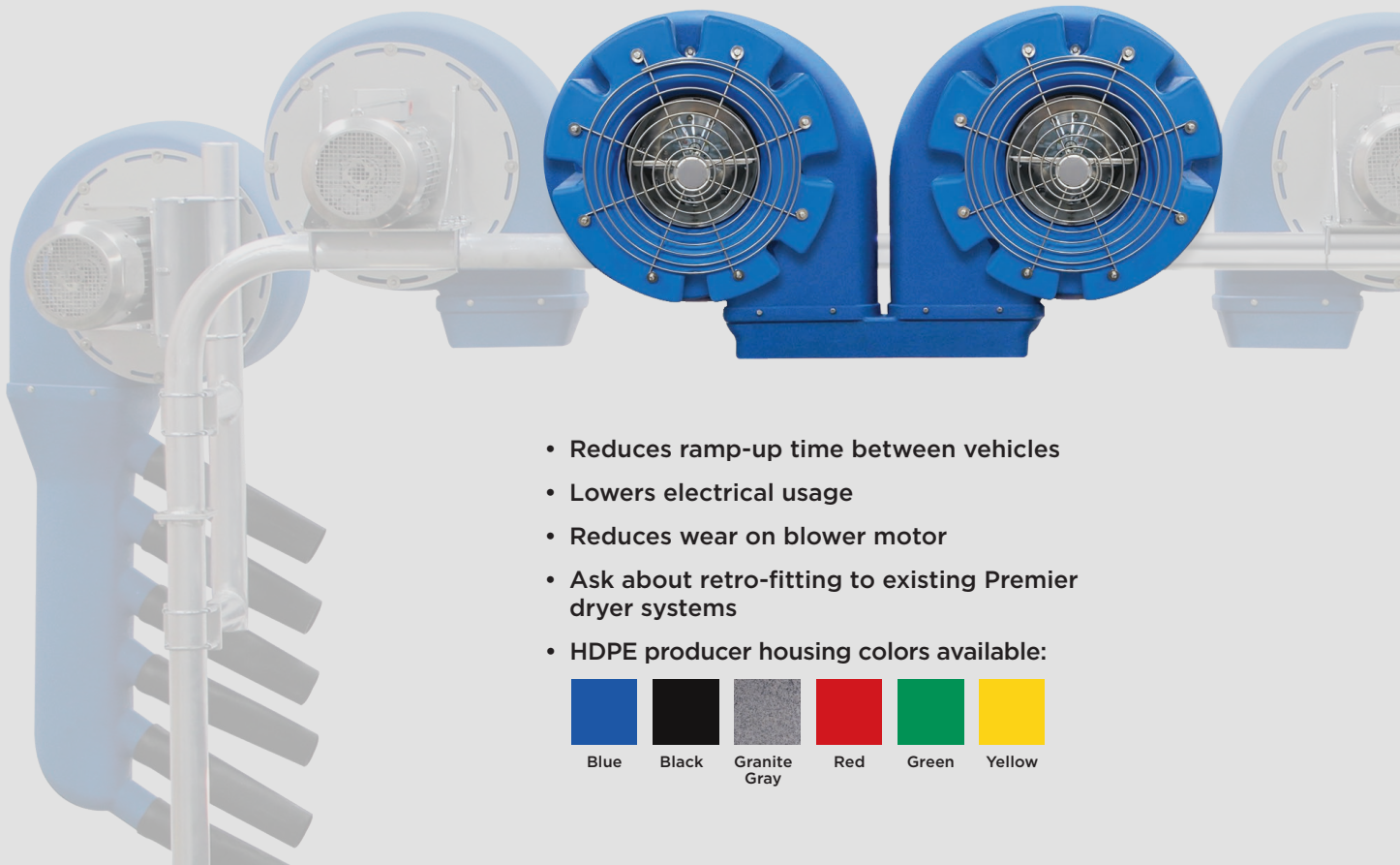
Additional custom configurations are available. Please contact us.



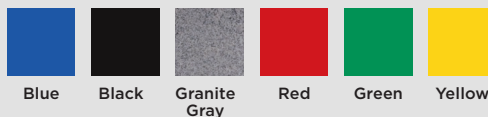


MOTORS  
AVAILABLE  
IN 5HP, 7.5HP,  
10HP OR 15HP

## Premier Air Gate



- Reduces ramp-up time between vehicles
- Lowers electrical usage
- Reduces wear on blower motor
- Ask about retro-fitting to existing Premier dryer systems
- HDPE producer housing colors available:





## Arches and Overheads

These days, a car wash is about more than just a clean car. It's about providing your customers with a unique experience that makes a big impact. Our line of LED arches and overheads are sure to do just that. All of our signs are 120 volt, and are fully customizable with pucks, dots or spinners.

Our team of graphic designers are ready to create a standout arch that elevates our customer's brand. Creative designs and fast turnaround times, paired with the quality you've come to expect from Premier, turns a cruise through a wash into an illuminated adventure all can enjoy. Choose from our lineup of standard arches, or contact us for a one-of-a-kind custom design.

ADD PUCKS, SPINNERS OR DOTS FOR ADDED IMPACT!

# Signage



ALL SIGNS ARE  
HAND CRAFTED AT  
OUR WISCONSIN  
FACILITY

Light Effects  
Arch with  
Shield Top  
Shown



5 Piece  
Grand Arch  
with Custom  
Shaped Top  
Shown

All of our signs are hand  
crafted with pride at our central  
Wisconsin facility. We offer  
a full line of standard arch  
shapes, or we can custom build  
an arch to suit your needs.

CHOOSE A  
STANDARD ARCH,  
OR MODIFY IT TO  
SUIT YOUR NEEDS





Badge Grand Arch with 4" Pucks and Dots Shown



## Add Light Effect Options to Your Arch or Sign



### 4" LED Puck Lights

- Can be set to on, strobe or halo effect
- Available in green, blue, yellow, red and white



### 2" LED Spinners

- Available in green, blue, yellow, red, white and pink



### 1" Dot Light

- Available in white

### Flashers and Sequence Flashers

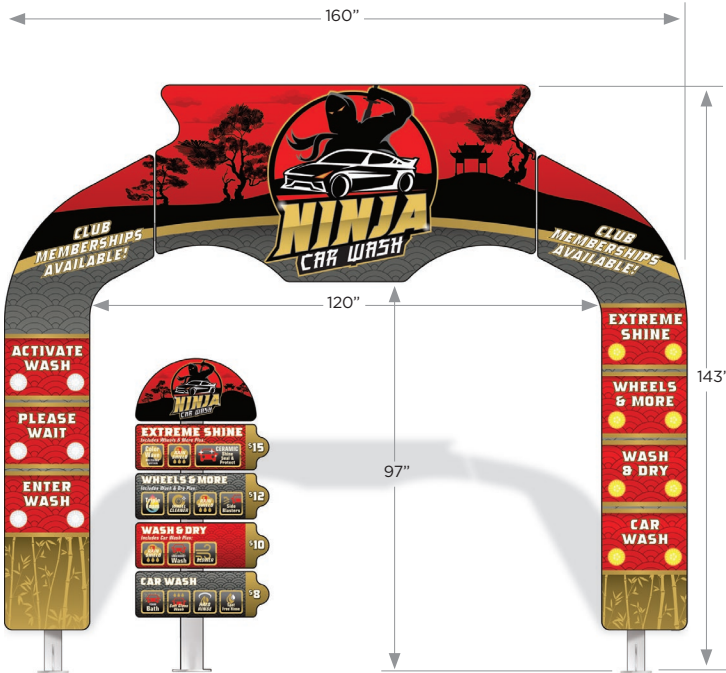


## Premier Arch





## Badge Arch

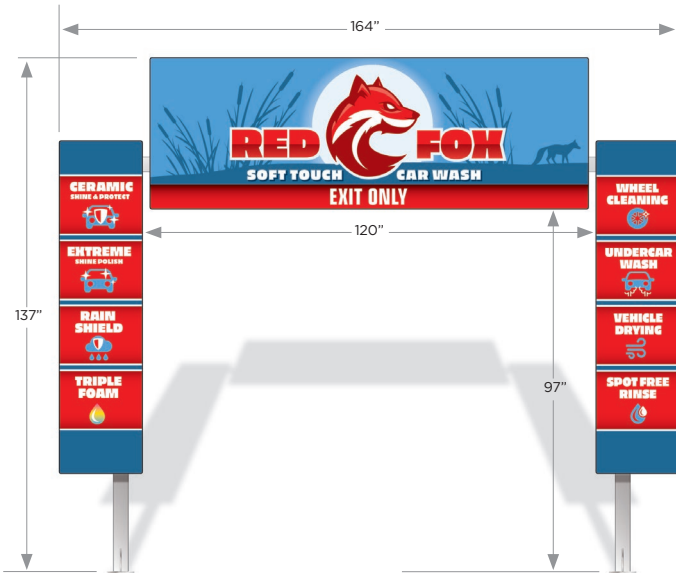


Badge Grand Arch Shown with Matching Sectional Menu

## Shield Arch



## 3 Piece Arch

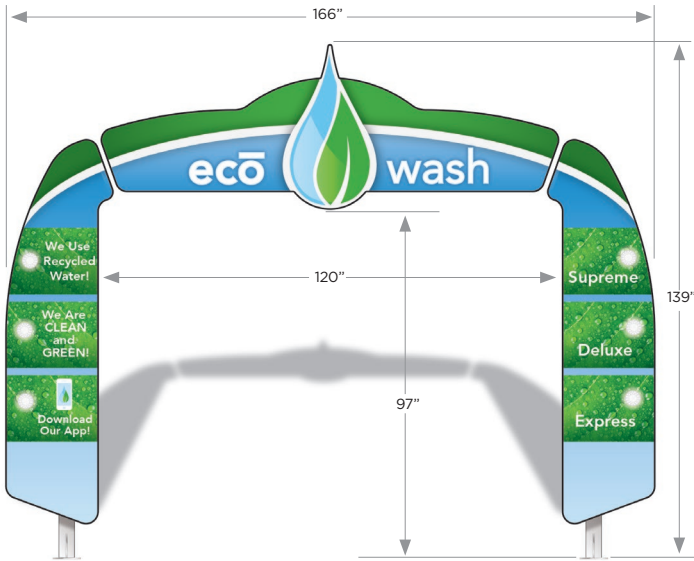


## 5 Piece Arch

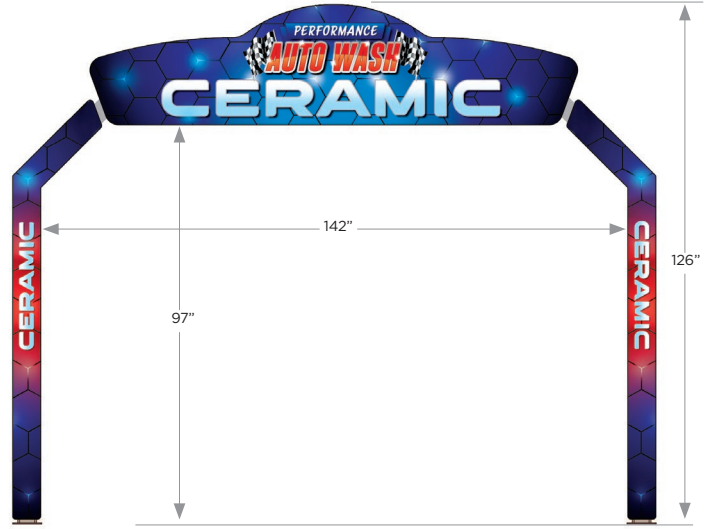


5 Piece Grand Arch Shown with Matching Sectional Menu

### Rain Drop Arch



### Light Effects Arch



### Custom Shaped Arches





## Menu and Menu Boards



OUR DURABLE HDPE SECTIONAL MENU HOUSINGS ARE AVAILABLE IN 6 COLORS!

## Sectional Menus

- 3-6 Sections Available
- 33" Wide x 96" High
- HDPE Color Options Include Red, Blue, Black, Granite Gray, Green and Yellow
- Custom Powder Coated Pedestal Available
- 120 Volt
- Aluminum Construction



## Menu Boards

- Many Sizes Available
- Metal Color Options Include Red, Blue, Yellow, White and Black
- 120 Volt
- Aluminum Construction



## Custom Menu Boards

- Create a Menu That Matches Your Image and Logo
- Metal Color Options Include Red, Blue, Yellow, White and Black
- 120 Volt
- Aluminum Construction



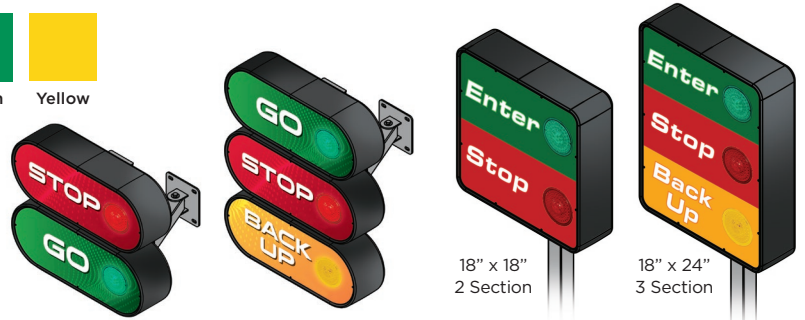
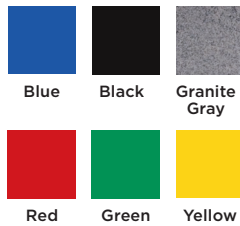
## Instructionals & Sectionals

- Available in Single Post or Wall Mount
- 120 volt
- Dual Pivot Stainless Steel Arms for Adjustability
- Metal Color Options Include Red, Blue, Yellow, White and Black
- HDPE Color Options Include Red, Blue, Black, Granite Gray, Green and Yellow



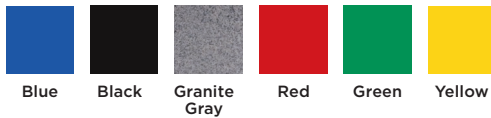
## Wall Mount & Pedestal Sectionals

- 2 - 8 sections available
- All signs are 120 Volt
- Dual pivot stainless steel arms for adjustability
- LED puck color options: red, white, blue, yellow and green
- Powder coat color options: red, blue, black, yellow and white
- Stainless steel construction
- HDPE housing colors:



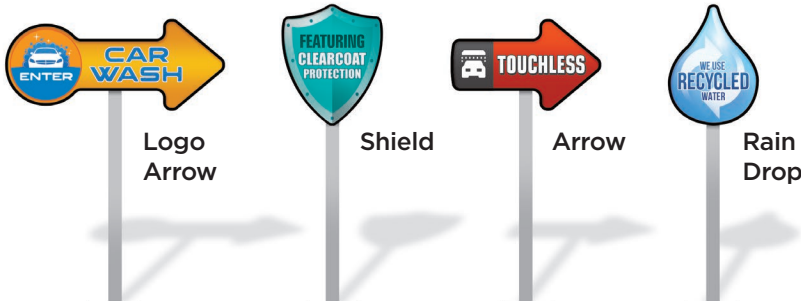
## Roto-Molded Signs

- All signs are 120 Volt
- Stainless steel construction
- HDPE housing colors:



**CLEARANCE 7'6"**

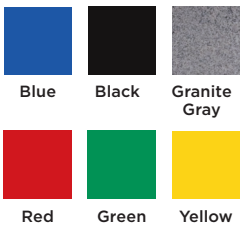
Clearance





## Tunnel/Wall Signs

- HDPE and aluminum housings available
- LED spinner light color options: red, blue, green, yellow, pink and white
- Stainless steel construction
- HDPE housing colors:



- 24" round or square



OUR DURABLE HDPE HOUSINGS ARE AVAILABLE IN 6 COLORS!

12" X 47.5" SHOWN WITH 2" GREEN SPINNERS

## Channel Letters



- 24", 30" and 36" letters available
- Many options and colors available. Please call for more information.

## Countdown Timer Signs

- HDPE round or square housings available
- Available with 6" red or blue LED numbers
- Stainless steel construction



- 24" round with timer



- 18" square with timer



## Custom Shaped Pedestals & Wall Mounts



Because we build everything in-house, our experienced team of designers, engineers and craftsmen have the capability to build just about any shape of sign your customers might need. Let us know how we can help.



## ACM Printed Signage

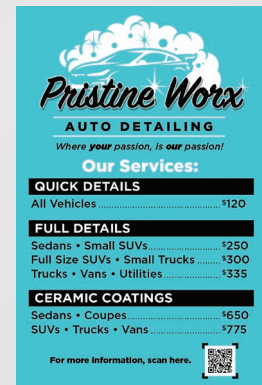
(Aluminum Composite Material)

- Laminated with a UV resistant material for added durability
- Can be used in-bay or outside
- Many sizes available
- Can be wall-mounted or mounted to a post



## Styrene and Coroplast Signage

- Laminated with a UV resistant material for added durability
- Pump toppers
- WindMaster® inserts
- Many sizes and options available



## ACM Printed In-Bay Signage

(Aluminum Composite Material)

- Laminated with a UV resistant material for added durability
- Can be used to add color to and promote products in self serve bays
- Many sizes available
- Can be wall-mounted



# Pay Station Canopies



## Double Leg Canopy

- Shown With Laser Cut "Pay Here" and Lit Roto-Molded "Clearance" Signs
- Roof Live Load: 40 psf
- RFID Reader Mount Available
- Single Leg Canopy Available (Flat Top Only)
- Basic Wind Speed: 130 mph



## Arch Canopy Top

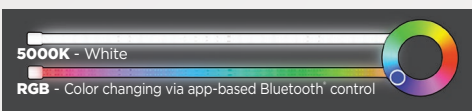
- Shown With LED Lit "Pay Here" and Lit Roto-Molded "Clearance" Signs
- Roof Live Load: 40 psf
- RFID Reader Mount Available
- Basic Wind Speed: 150 mph

### Features

- Double coated powder coating process with a zinc primer base and colored second coat
- Powder coated extruded aluminum top without ridges to eliminate debris buildup and nesting
- Laser-cut holes in post for neat and efficient electrical installation
- RFID reader mount available
- Footing covers for a clean look

### Lighting Options

- (1) 4' 5K LED included
- RGB upgrade available
- Jumper cables and off-site controls available with the Premier Hub



### Included

- Laser-cut "Pay Here" sign
- (1) 4' 5K LED

### Color Options

- Blue, black, red, green or yellow
- Custom colors available by request

### Optional Upgrades

- Additional LED lighting
- J-anchor template kit
- Lit "Pay Here" sign
- Lit "Clearance" sign
- Customizable artwork to meet your customer's expectations and brand



### LED Sign Lit Options



### Unlit Sign Options





## Clearance Structures & Signs

### Straight Top Clearance Structures

- Built in-house
- Many powder coat colors available



MANY POWDER COAT COLORS ARE AVAILABLE!

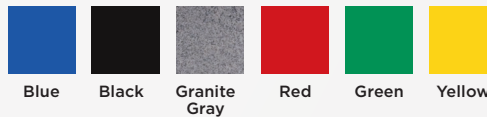


### Curved Top Clearance Structures

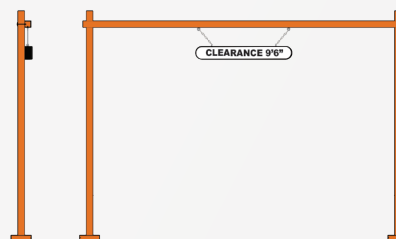
- Built in-house
- Many powder coat colors available
- Shown with custom ACM printed sign

### Roto-Molded Clearance Signs

- Available both Lit and Unlit
- Custom designs and colors available
- HDPE housing colors:



Blue Black Granite Gray Red Green Yellow



### Dual Leg Clearance Structures

- Built in-house
- Many powder coat colors available
- Can be customized to any size needed



# Stainless Steel Canopy Vacs

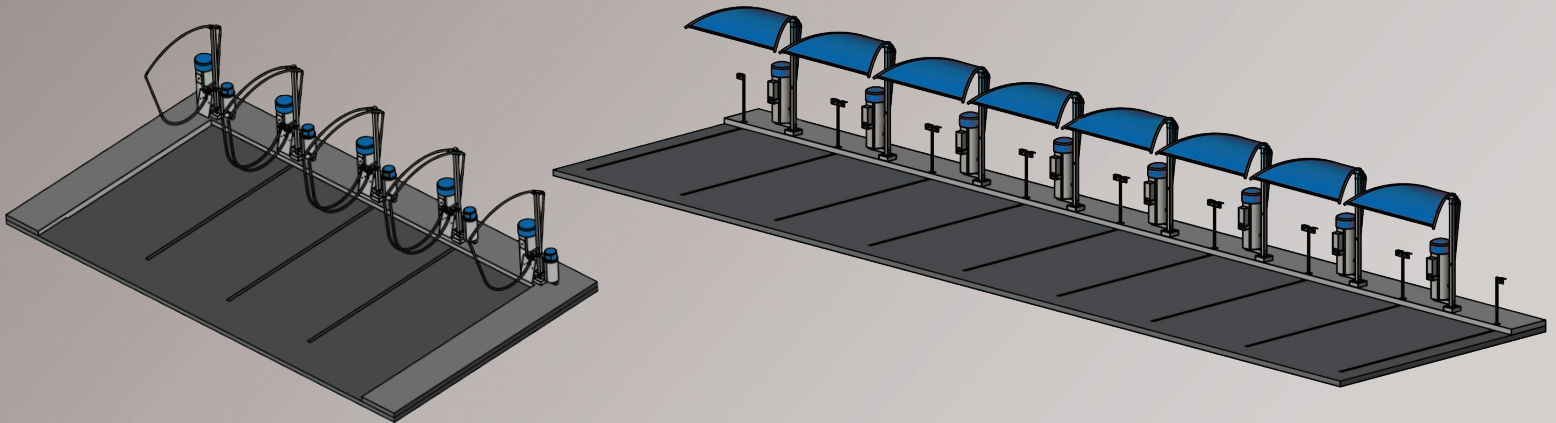
## 2 OR 3 MOTOR OPTIONS (220v motor upgrade available):

- 2 - 120v motors with 2" hose: FLA = 20 amps, 270 CFM, 651 AirWatts
- 3 - 120v motors with 2" hose: FLA = 30 amps, 345 CFM, 951 AirWatts
- 220v motors:  
 2 motors = 15 amps, 223 CFM, 620 AirWatts  
 3 motors = 25 amps, 315 CFM, 931 AirWatts

## Vacuum Specs

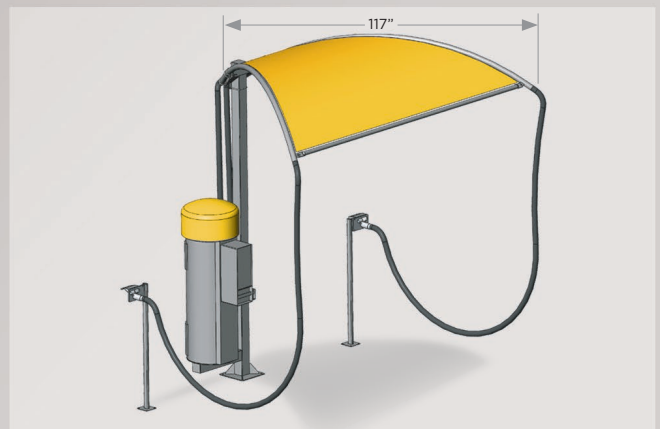
- 4-bag filter system
- 2 accessible back doors for easy clean out
- Tough upholstery tool with swivel cuff
- Added money box lock bar for security
- **Express 1** includes push button or toggle switch options
- **Express 2** offers multiple timer, coin, bill and credit card options
- Powder coating available
- Other options include light poles with LED lights, post covers and mat holders
- Dome colors:
- Hose colors:
- Canopy colors:
- Custom canopy colors available upon request





### Premier Express-1 Vac

- Single vac station with boom
- LED upgrades available
- Push button or toggle switch start



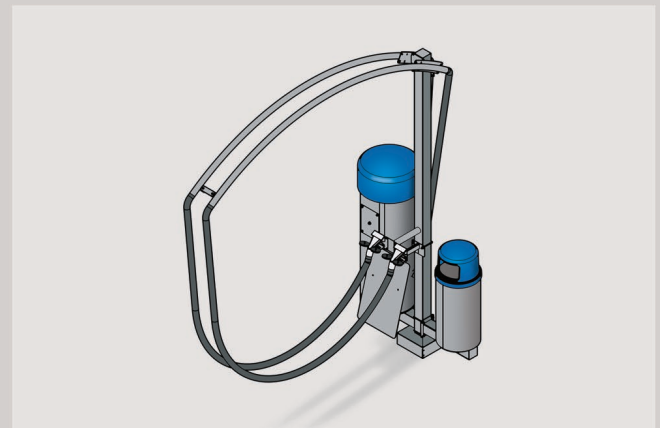
### Premier Single Express-2 Vac With Meter Box

- Single vac station with dual boom
- Canopy add-on for dual vac station
- Pedestal mounted nozzle holder
- LED upgrades available



### Premier Single Express-2 Vac With Meter Box

- Single vac station with dual boom
- Canopy add-on for dual vac station
- Garbage can add-on
- LED upgrades available



### Premier Express-1 Vac With Dual Straight Booms

- Designed for multiple stall use
- Shown with optional mat holder and trash can
- LED upgrades available



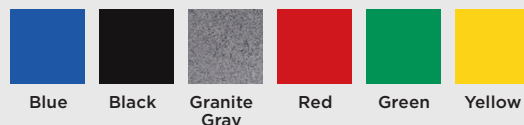
### Silver Bullet

- Stainless steel cabinet
- Crevice tool
- Easy clean out door
- Single 120v motor
- Wire with another vacuum or toggle switch option
- Plastic domes available in:



Premier Vacs are equipped with newly designed high efficiency vacuum motors gaining 85% more performance with two motors, outperforming the competition's three motor and central vac systems. Want even more performance? A third motor will not disappoint.

- Options include light poles with LED lights, post covers mat holders and daylight sensors
- Available hose colors: red, blue, yellow, black and gray
- Available standard and lit dome colors:





## Stainless Steel Vacs

**2 OR 3 MOTOR OPTIONS** (220v motor upgrade available):

- 2 - 120v motors with 2" hose: FLA = 20 amps, 270 CFM, 651 AirWatts
- 3 - 120v motors with 2" hose: FLA = 30 amps, 345 CFM, 951 AirWatts
- 220v motors:
  - 2 motors = 15 amps, 223 CFM, 620 AirWatts
  - 3 motors = 25 amps, 315 CFM, 931 AirWatts



### Premier Express Vac

- 2 or 3 motor options (3 motor 30 FLA, 2 motor 20 FLA)
- 4-bag filter system
- 2 accessible back doors for easy clean out
- Tough upholstery tool with swivel cuff
- Added money box lock bar for security
- **Express 1** includes push button or toggle switch options
- **Express 2** offers multiple timer, coin, bill and credit card options
- **Express 3** features air and vacuum  
*(Not available with 3rd motor)*



### Premier Aroma Vac

- 2 or 3 120v motor options (3 motor 30 FLA, 2 motor 20 FLA)
- Dispenses 3 fragrances of your choice
- 4-bag filter system
- 2 accessible back doors for easy clean out
- Tough upholstery tool with swivel cuff
- Bright LED display timer with adjustable price per function
- Optional coin, bill or credit card acceptors



### Premier Executive Vac

- 2 or 3 120v motor options (3 motor 30 FLA, 2 motor 20 FLA)
- 4-bag filter system
- Dispenses shampoo and 3 fragrances of your choice
- 2 accessible back doors for easy clean out
- Tough upholstery tool with swivel cuff
- Bright LED display timer with adjustable price per function
- Can be set up to accept coins, bills and/or credit cards



### Premier Magic Vac

- 2 or 3 120v motor options (3 motor 30 FLA, 2 motor 20 FLA)
- Dispenses shampoo and spot remover
- 4-bag filter system
- 2 accessible back doors for easy clean out
- Tough upholstery tool with swivel cuff
- Bright LED display timer with adjustable price per function
- Multiple coin, bill and credit card acceptor options



# Introducing the New 3 Phase Vacs

Built for continuous use, Premier's new 3 phase vacs provide less noise, smoother operation, reduced strain on components, and significantly improved efficiency compared

to single phase alternatives. The result is faster, more effective cleaning with less downtime, allowing customers to move through the vacuum area quickly, while still achieving a thorough interior clean. Whether handling heavy debris, sand, or fine dust, our 3 phase vacuums maintain strong, reliable suction from the first car to the last.



### 3 Phase Premier Express 1 Vac

- 3 Phase Motor
- 4-bag filter system
- 2 accessible back doors for easy clean out
- Tough upholstery tool with swivel cuff
- Includes push button or toggle switch options



### 3 Phase Premier Express 2 Vac

- 3 Phase Motor
- 4-bag filter system
- 2 accessible back doors for easy clean out
- Tough upholstery tool with swivel cuff
- Added money box lock bar for security
- Offers multiple timer, coin, bill and credit card options

## 3 Phase Vac Specifications

Frequency (Hz)	Air flow (CFM/m <sup>3</sup> /hr)	Rated Vacuum (in. H <sub>2</sub> O/mbar)	Rated Pressure (in. H <sub>2</sub> O/mbar)	Motor (HP/kW)	Voltage (V)	Current (A)
60	221/376	96/240	92/230	4.6/3.4	230 YY/460 Y	12.6 YY/7.3 Y



## More Performance

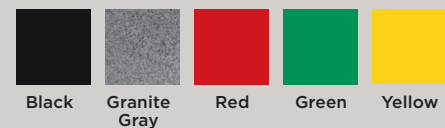
1 Phase (2 Motors)	1 Phase (3 Motors)	3 Phase (1 Motor)
-28 kPa = 112 in H <sub>2</sub> O	-54 kPa = 216 in H <sub>2</sub> O	-88 kPa = 353 in H <sub>2</sub> O



## Quieter Operation

1 Phase (3 Motors)	3 Phase (1 Motor)	1 Phase (3 Motors)	3 Phase (1 Motor)
5 ft 81.9 dB	5 ft 79.5 dB	10 ft 79.2 dB	10 ft 74.4 dB

- Options include light poles with LED lights, post covers mat holders and daylight sensors
- Available hose colors: red, blue, yellow, black and gray
- Available standard and lit dome colors:



# Meter Boxes



FULLY  
CUSTOMIZABLE  
TO SUIT YOUR  
CUSTOMER'S  
NEEDS

## Stainless Steel Meter Boxes

- Push Button or Rotary Switch Options
- Stainless Steel | 10 Gauge #4 Polished
- Added Security Bar for Extra Protection

### LED Instructionals and Timers

- Dixmor LED-8 or LED 9 display timer
- DTB Premier Big Timer
- Steady State timer/flat pak

### Bill Acceptors

- Mars® bill acceptor (1, 5, 10, 20)

### Credit Card Acceptors

- CryptoPay credit card swipe
- CryptoTap Plus
- Nayax VPOS Touch Pulse
- Monex card reader

### Selector Options

- Rotary switch
- Push button

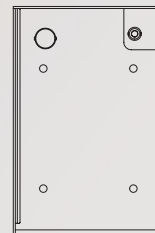
### Coin Acceptors

- Slugbuster® 3, 2, or 1 coin
- Microcoin® QL coin acceptor with mounting bracket
- IMONEX® Z3 coin adapter (quarter only)

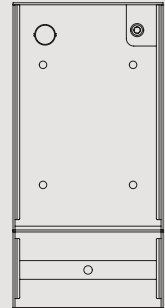
### Rotary or Push Button Icons



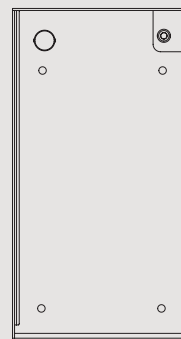
### Premier Premium Short 10" x 15.27"



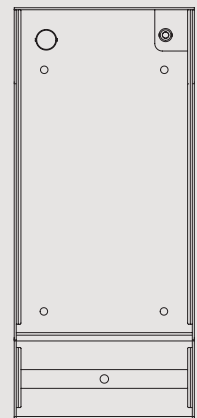
### Premier Premium With Coin 10" x 20.44"



### Premier Ultimate Short 12" x 22.27"



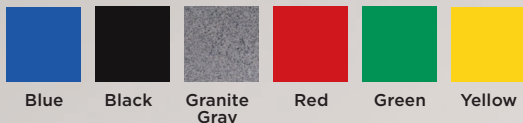
### Premier Ultimate With Coin 12" x 27.44"





## Palm Dryers

- **110V AC**  
(3 Motor) 50 amp service  
(2 Motor) 30 amp service
- **240V AC**  
(3 Motor) 25 amp service  
(2 Motor) 20 amp service
- Relay: 110v, 24v or wired direct
- Available in attic mount, half wall pedestal mount or wall mount
- Available hose colors: red, blue, yellow, black and gray
- Available dome colors:



# Palm Dryers



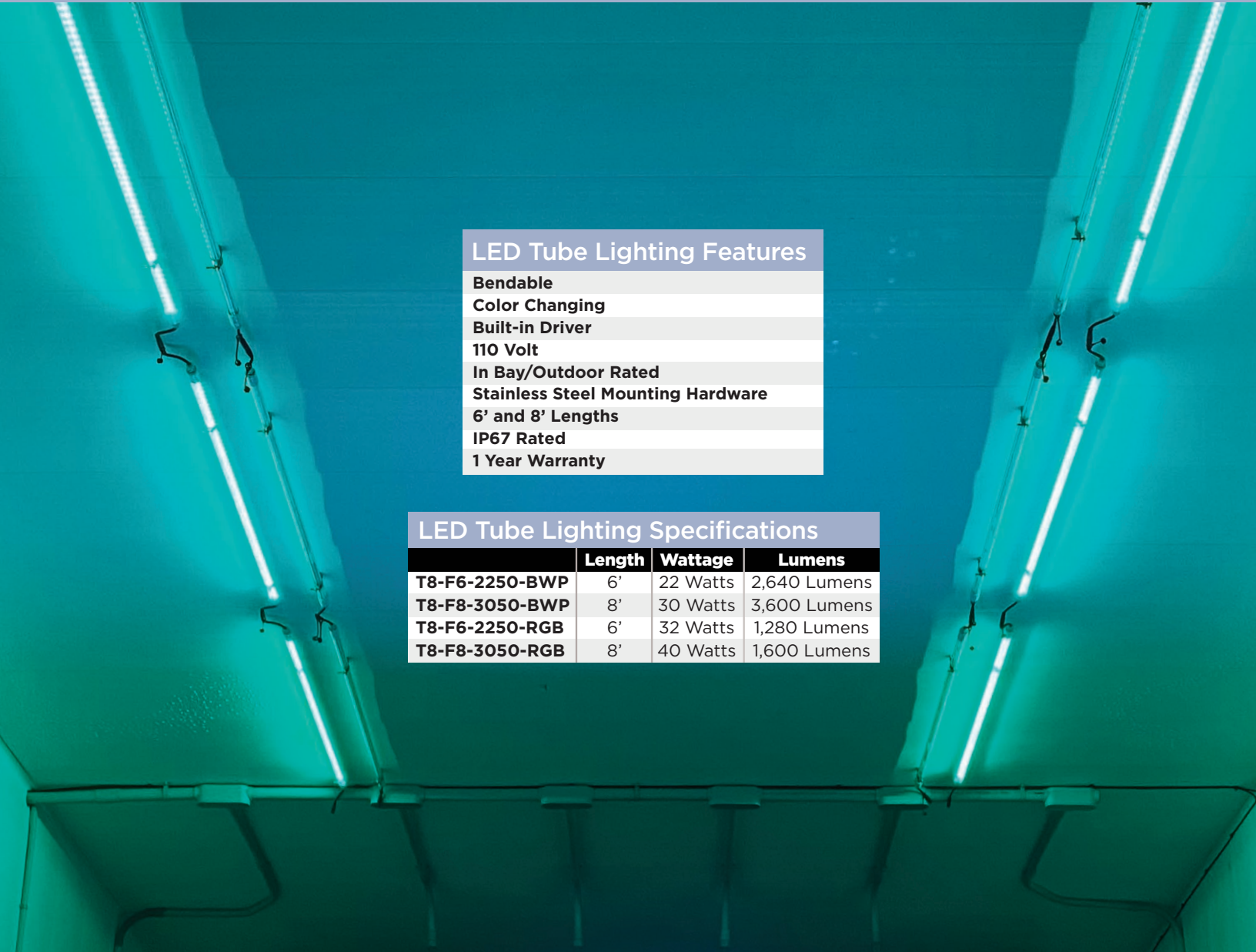
**PALM DRY**  
TOUCHLESS AIR DRYING

1. INSERT MONEY
2. REMOVE AIR GUN FROM WALL HANGER
3. SELECT DRY
4. DRY VEHICLE FROM TOP TO BOTTOM
5. TURN SWITCH TO OFF
6. RETURN AIR GUN TO WALL HANGER

premier

MANY HOSE AND  
DOME COLOR  
OPTIONS  
AVAILABLE





### LED Tube Lighting Features

- Bendable**
- Color Changing**
- Built-in Driver**
- 110 Volt**
- In Bay/Outdoor Rated**
- Stainless Steel Mounting Hardware**
- 6' and 8' Lengths**
- IP67 Rated**
- 1 Year Warranty**

### LED Tube Lighting Specifications

	Length	Wattage	Lumens
<b>T8-F6-2250-BWP</b>	6'	22 Watts	2,640 Lumens
<b>T8-F8-3050-BWP</b>	8'	30 Watts	3,600 Lumens
<b>T8-F6-2250-RGB</b>	6'	32 Watts	1,280 Lumens
<b>T8-F8-3050-RGB</b>	8'	40 Watts	1,600 Lumens



The Premier LED App allows complete access to lighting controls from your phone, tablet or computer.

Control multiple locations and make changes while off-site with ease using the Premier Hub,

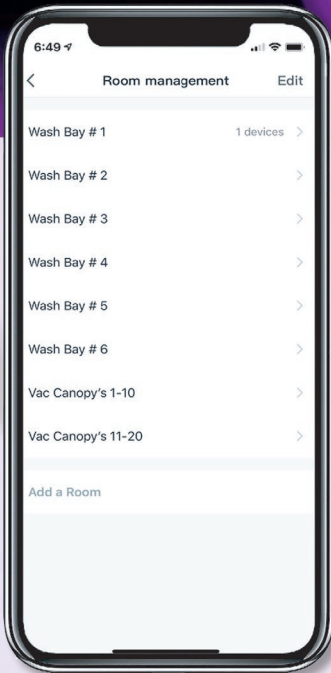
Premier Tube Lighting is bendable and made to be in bay, as well as outdoors. These lights create an eye-popping focal point for your facilities and outdoor canopy systems.

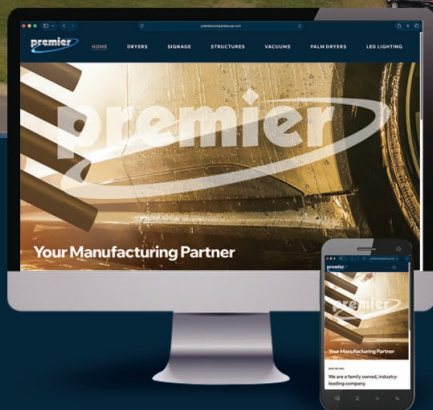
# LED Lighting



COLOR CHANGING  
POWERED BY THE  
PREMIER APP!

ROOM  
MANAGEMENT  
CONTROLLED BY  
THE APP





VISIT US ONLINE



**premier**

Your Manufacturing Partner

2210 Heldt Street  
Merrill, WI 54452  
866.539.3100  
sales@precisionlaser cutting.com  
premiercompaniesusa.com

